



Baytree Close, Coventry, CV2 1HP

**SHELDON
BOSLEY
KNIGHT**

LAND AND
PROPERTY
PROFESSIONALS

Property Description

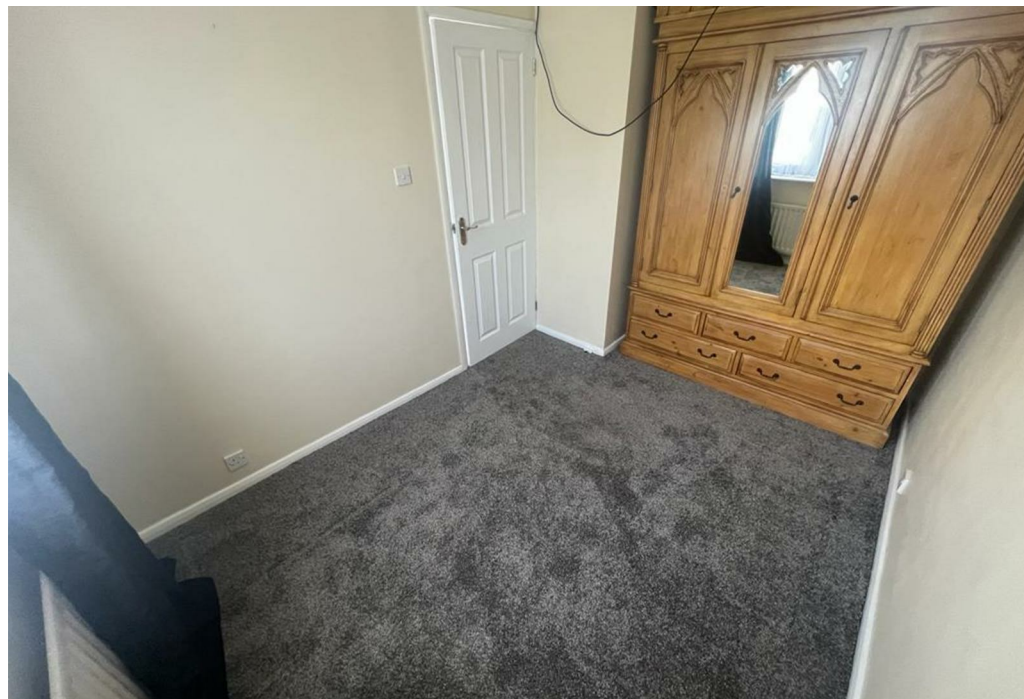
*** AVAILABLE NOW *** This well-presented two-bedroom semi-detached home is located in the residential area of Wood End, Coventry, offering convenient access to local amenities, schools, and transport links.

The property comprises an entrance hallway, a spacious living room leading through to a fitted kitchen complete with washing machine and tumble dryer. Patio doors open onto the private rear garden. Upstairs offers two double bedrooms with wardrobes and a family bathroom with bath, WC and sink.

Externally, the property benefits from both front and rear gardens, a garage, and a driveway providing off-road parking.

Offered UNFURNISHED. Council Tax Band A. Energy Rating C.







Key Features

- Available Now
- Two Bedrooms
- Rear Garden
- Driveway
- Garage
- Council Tax Band A
- Energy Rating C

£1,050 PCM